



1923.-1925. Stambena zgrada Čorak, Obala kneza Branimira (..) / Brajevića prilaz, Split

Figure A2.1: The Čorak residential building in Split. 1923–1925.



1924.-1926. Meteorološki opservatorij, Kolombatovićevo šetalište 1, Marjan, Split

Figure A2.2: The Meteorological Observatory on the Marjan peninsula, Split. 1924–1926.



1927. Veslački klub Gusar, Matejuška, Split
srušen 1990.

Figure A2.3: The Gusar Rowing Club building located on the Matejuška dock, Split. 1927. It was torn down in 1990.

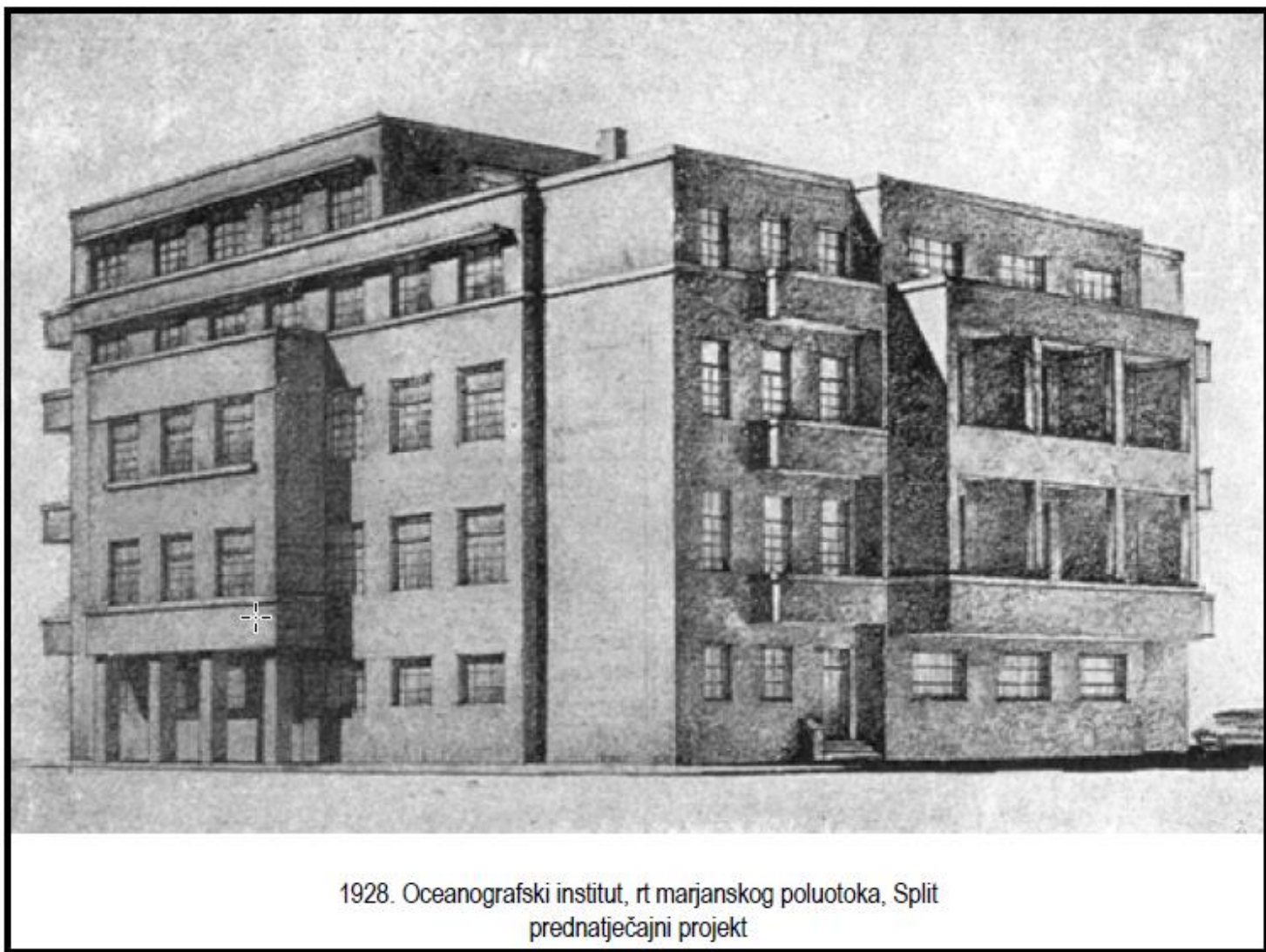
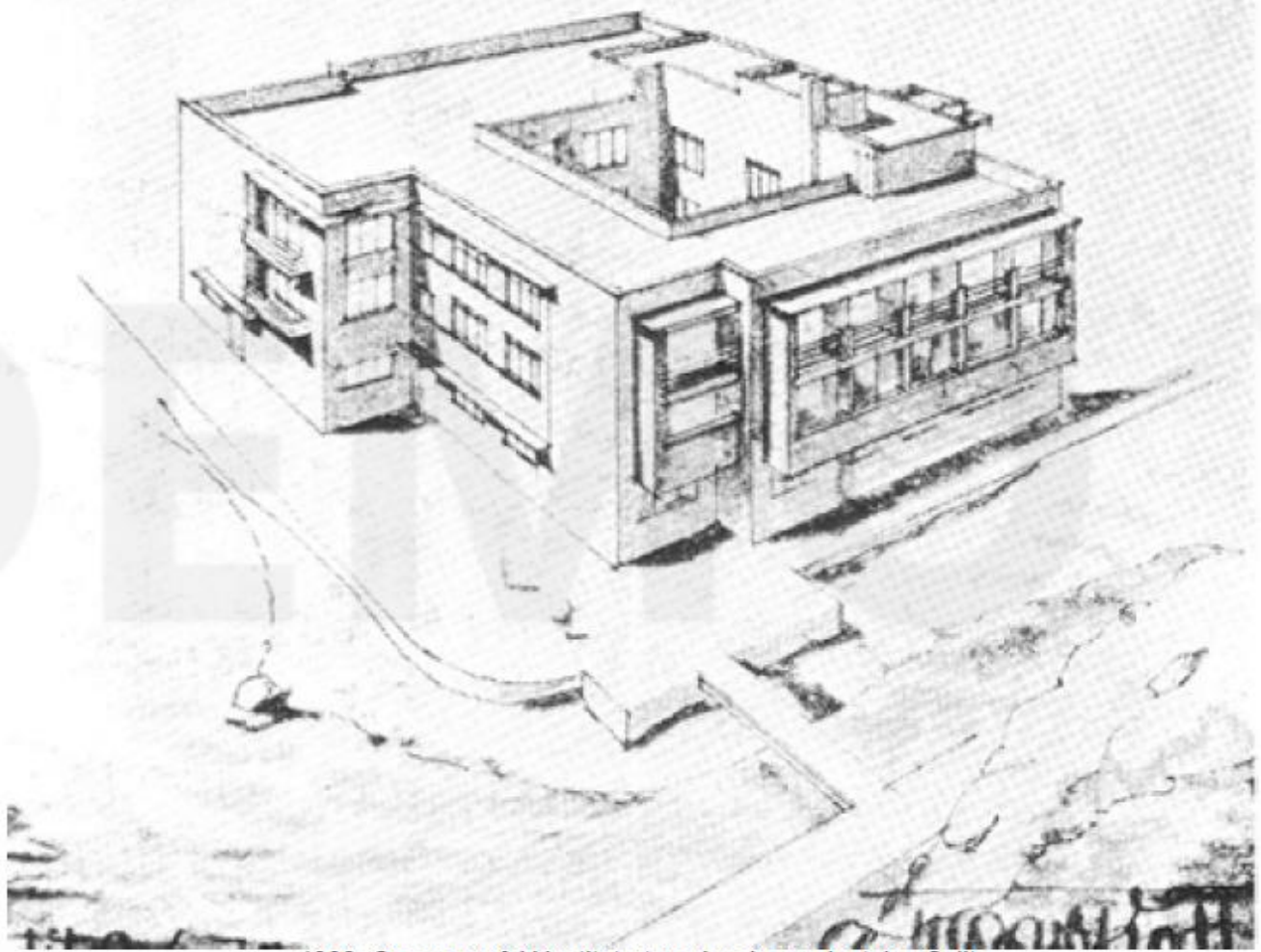


Figure A2.4: The Oceanographic Institute in Split, located on the cape of the Marjan peninsula. Preliminary (precompetition) project design. 1928.



1927. Obiteljska kuća Kodl, Glagoljaška 1, Split

Figure A2.5: The Kodl family residence, Split. 1927.



1930. Oceanografski institut, rt marjanskog poluotoka, Split
natječajni projekt i razrada

Figure A2.6: The Oceanographic Institute in Split, located on the cape of the Marjan peninsula. Competition project design. 1930.



Figure A2.7: The Split Peristyle square with the statue of Gregory of Nin by the Croatian sculptor Ivan Meštrović. 1929.



1928.-1930. Osnovna škola Manuš-Dobri, Kliška bb, Split

Figure A2.8: The Manuš-Dobri Elementary School in Split. 1928–1930.



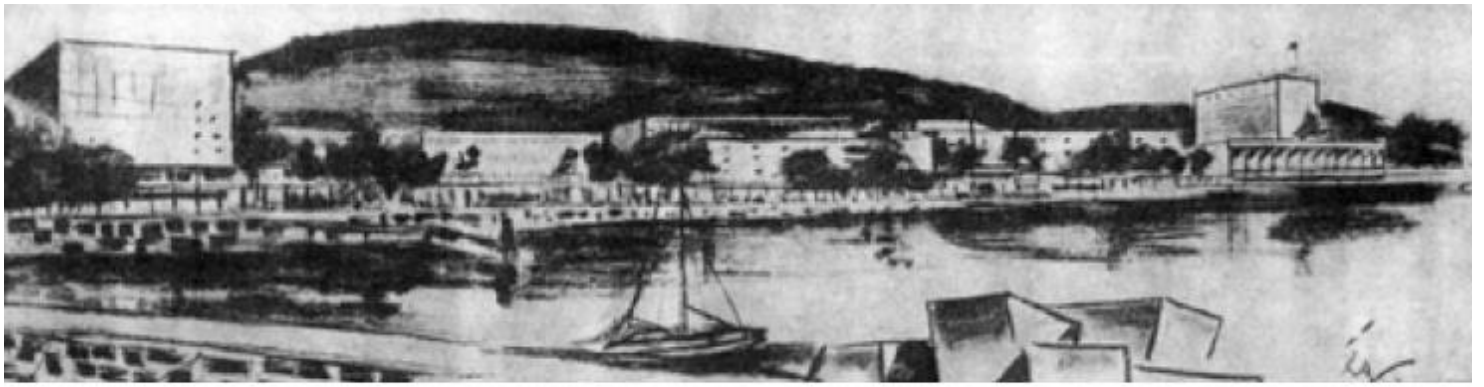
1928.-1930. Osnovna škola Manuš-Dobri, Kliška bb, Split

Figure A2.9: The Manuš-Dobri Elementary School in Split. 1928–1930.



1934.-1937. Hotel Jugoslavenkog hotelskog A.D., Trumbićeva obala 18, Split
autorska razrada natječajnih projekata Baldasar-Cicilijani i Simeonović; naknadno dograđena kino-dvorana

Figure A2.10: The Ambassador hotel in Split. 1934–1937.



1951. Upravne i stambene zgrade, Zapadna obala, Split
+ M. Markovina, B. Pervan, N. Šegvić; studija

Figure A2.11: Administrative buildings on Split's West Coast.