

Pictures of the substation complex and Dujmovača site

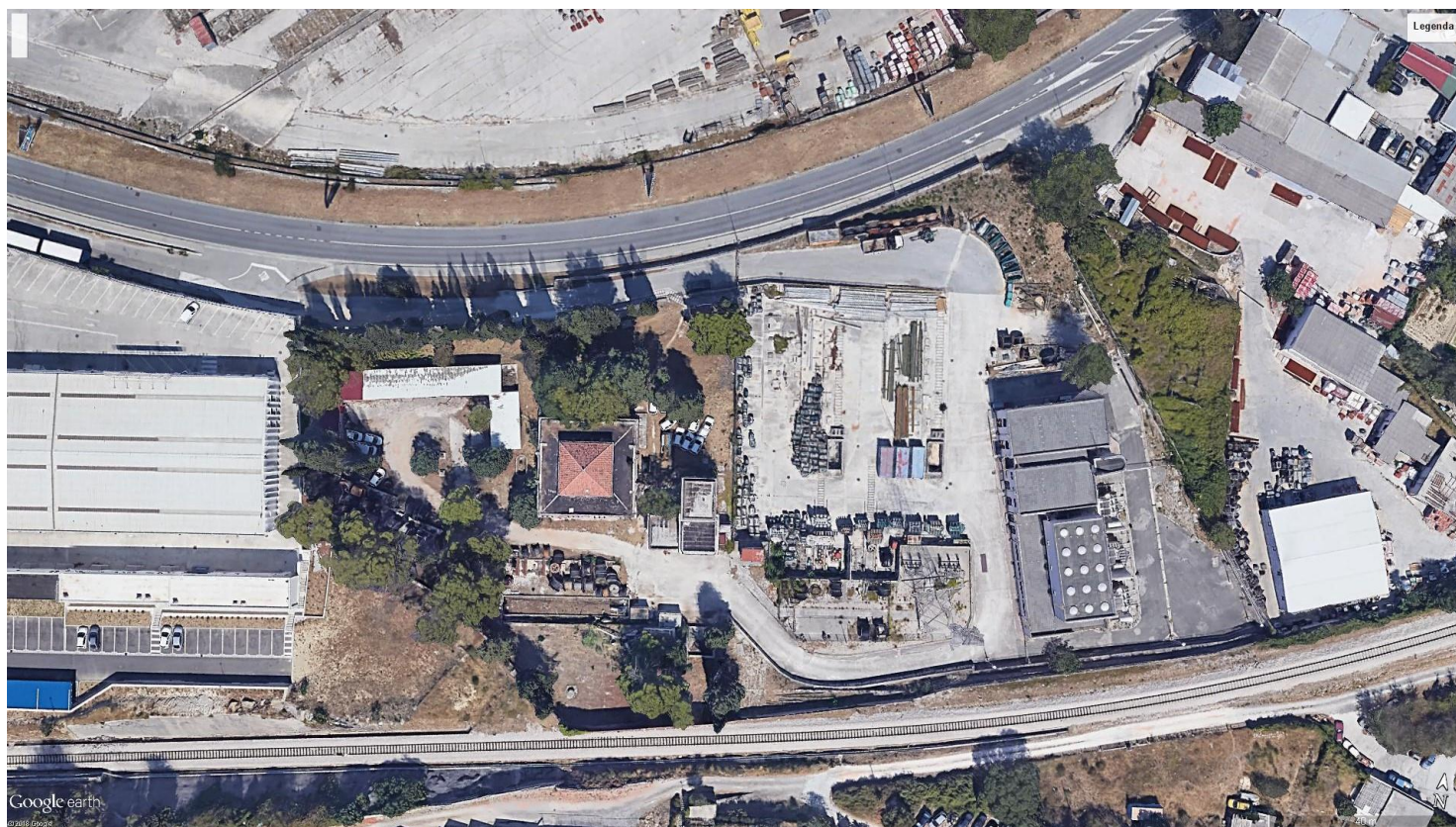


Figure A1.1: Aerial view of where the substations are located (bottom of the image – south; top is north).



Figure A.1.2: Aerial view from the northwest of where the substations are located.



Figure A1.3: Aerial view from the southwest of where the substations are located.



Figure A1.4: The church of St. Domnius, viewed from the northwest.



Figure A1.5: Transmission line on the site of the electrical substations.



Figure A1.6: Kodl's auxiliary substation, viewed from the northeast.



Figure A1.7: The eastern part of the site, which is currently an outdoor storage and a grounded concrete block with electric installations and a transmission line.



Figure A1.8: The original entrance to the substation complex, complete with brick details, viewed from the north.



Figure A1.9: The original wall of the complex with brick details, viewed from the north.



Figure A1.10: The northwest entrance point into the substation complex.